



**Hilcorp**

**COST COOK INLET 1 DST07**

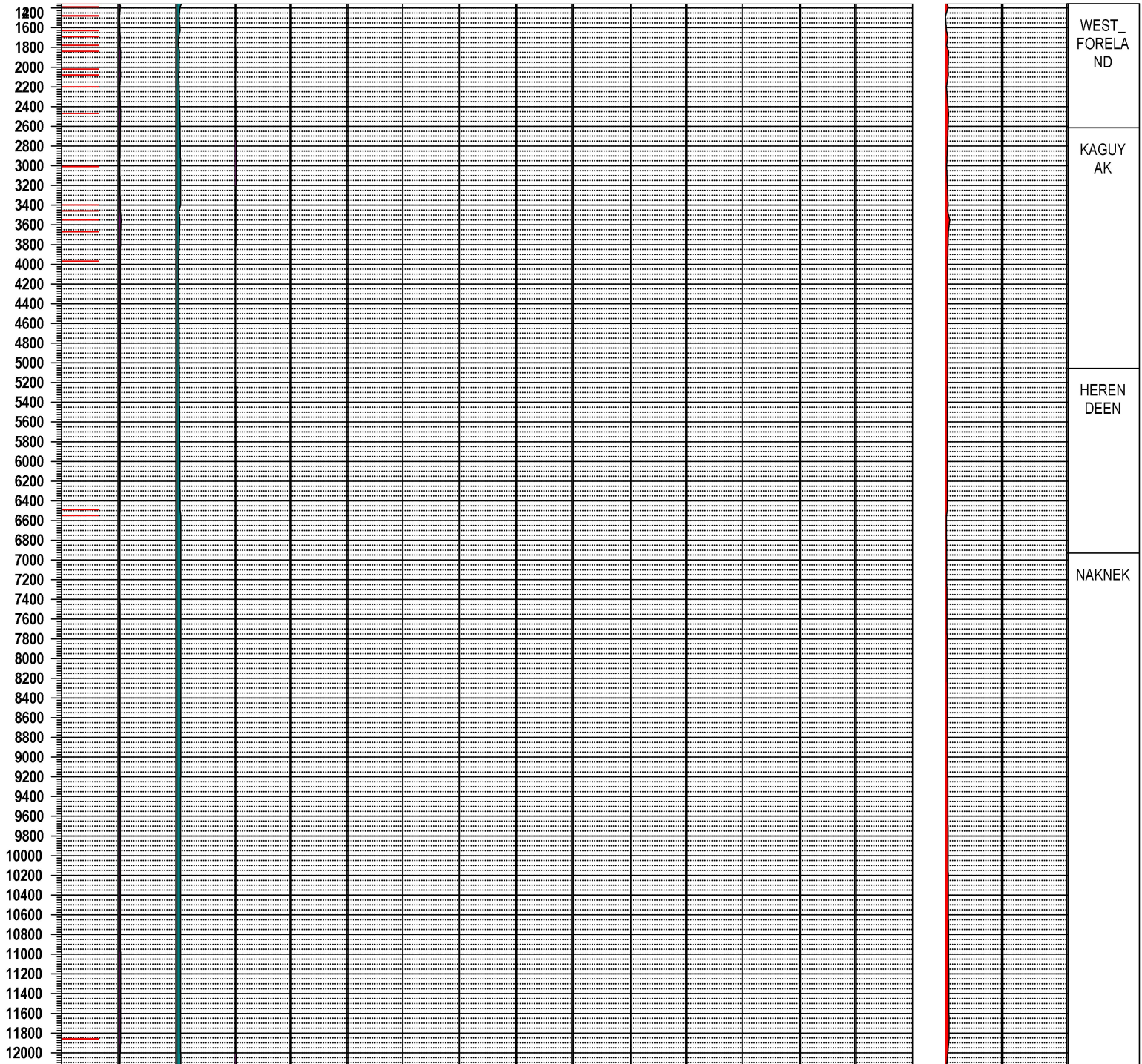
## Lab Loaded Cuttings Aliquot 2

## VAS Hydrocarbons Log supplied by AHS

**Printed Scale on 8.5" by 11" paper in inches per foot = 1 :**

SLV=Standard Lateral Volume=4500' long, Radius=100'

TOPS		ANALYTICAL VALUES																								EQUIV. PRODUCTION																															
Oil MBbls/SLV Calculated Using HC Standards	200	MCF Gas/SLV	0	4000	C8 AROMATICS	0	1500	TOLUENE	0	1500	BENZENE	0	1500	C8 NAPHTHENES	0	1500	C7 NAPHTHENES	0	1500	C6 NAPHTHENES	0	1500	OCTANES	0	1500	HEPTANES	0	1500	HEXANES	0	1500	PENTANES	0	1500	BUTANES	0	1500	PROPANE	0	10000	ETHANE	0	1000	600000	METHANE	SAMPLES	DEPTH	NanoMoles Hydrocarbon per 400 microLiters Cuttings									



Company: Hilcorp

Field: Cook Inlet

Well: COST COOK INLET 1 DST Data

**Start:** Lab Loaded Cuttings Aliquot 2

Date: 7-Dec-20

**Latitude:**

Longitude:

County: Cook Inlet

State: AK

Country: **USA**

API#: 55220000010000